

SUBDIVISION ACT 1988 PLAN OF SUBDIVISION	EDITION 1	PLAN NUMBER PS815490L
--------------------------------------------------------	------------------	---------------------------------

LOCATION OF LAND PARISH: PUEBLA TOWNSHIP: SECTION: CROWN ALLOTMENT: 63(PART), 71(PART), 72A(PART) & FORMER GOVERNMENT ROAD CROWN PORTION: TITLE REFERENCES: VOL. 11979 FOL. 640, VOL. 12092 FOL. 056 LAST PLAN REFERENCE: PS804773K LOT A, PS815489U LOT B POSTAL ADDRESS: 1535 SURF COAST HIGHWAY <small>(at time of subdivision)</small> TORQUAY, VIC 3228 MGA CO-ORDINATES: E 265 850 ZONE: 55 <small>(of approximate centre of land in plan)</small> N 5 756 000 GDA 94	COUNCIL NAME : SURF COAST SHIRE COUNCIL
-----------------------------------------------------------------------------------------------------------------------------------------------------------------------------------------------------------------------------------------------------------------------------------------------------------------------------------------------------------------------------------------------------------------------------------------------------------------------------------------------------------------------------	------------------------------------------------

VESTING OF ROADS OR RESERVES		QUAY 2 ESTATE - RELEASE 14 NUMBER OF LOTS IN THIS PLAN : 27 + 3 BALANCES TOTAL AREA OF LAND IN THIS PLAN : 14.57ha (INCLUDING BALANCES 12.84ha) DEPTH LIMITATION: SEE NOTATIONS.
IDENTIFIER	COUNCIL / BODY / PERSON	
ROADS, R-1 RESERVE No.1	SURF COAST SHIRE COUNCIL POWERCOR AUSTRALIA LTD.	

NOTATIONS	
LOTS 1-1400 (BOTH INCLUSIVE) HAVE BEEN OMITTED FROM THIS PLAN. ANY EASEMENTS SHOWN ON PREVIOUS PLANS AS IT AFFECTS ROADS R-1 ON THIS PLAN ARE REMOVED VIDE SCHEDULE 5, CLAUSE 14 OF THE ROAD MANAGEMENT ACT 2004. DEPTH LIMITATION : CROWN ALLOTMENT 72A AND PART FORMER GOVERNMENT ROAD - 15.24m BELOW THE SURFACE.	OTHER PURPOSE OF THIS PLAN : CREATION OF RESTRICTION THE REGISTERED PROPRIETORS OF THE BURDENED LAND COVENANT WITH THE REGISTERED PROPRIETORS OF THE BENEFITED LAND AS SET OUT IN THIS RESTRICTION WITH THE INTENT THAT THE BURDEN OF THE RESTRICTION RUNS WITH AND BINDS THE BURDENED LAND AND THE BENEFIT OF THE RESTRICTION IS ANNEXED TO AND RUNS WITH THE BENEFITED LAND BURDENED LAND: LOTS 1401 - 1427 (BURDENED LOTS) BENEFITED LAND: LOTS 1401 - 1427 (BENEFITED LOTS) RESTRICTION: UNLESS WITH THE PRIOR APPROVAL OF THE RESPONSIBLE AUTHORITY, THE BURDENED LAND CANNOT BE USED EXCEPT IN ACCORDANCE WITH THE PROVISIONS RECORDED IN THE MCP AA5715. EXPIRY DATE: 31st DECEMBER 2029.

EASEMENT INFORMATION					STAGING: THIS IS NOT A STAGED SUBDIVISION PLANNING PERMIT No. PLN12/0281F SURVEY: THIS PLAN IS BASED ON SURVEY PS733270G. THIS SURVEY HAS BEEN CONNECTED TO PERMANENT MARKS No(s). ----- IN PROCLAIMED SURVEY AREA No. -----
LEGEND: A - APPURTENANT EASEMENT E - ENCUMBERING EASEMENT R - ENCUMBERING EASEMENT (ROAD)					
EASEMENT REFERENCE	PURPOSE	WIDTH (METRES)	ORIGIN	LAND BENEFITED /IN FAVOUR OF	
SEE SHEET 2 FOR EASEMENT DETAIL					

REF: 21437/14	VERSION: F	DATE: 20/12/19 21437-14-PS-M-F.DGN		ORIGINAL SHEET SIZE A3	SHEET 1 OF 7 SHEETS
		Reeds Consulting Pty Ltd Lvl 6, 440 Elizabeth Street Melbourne Victoria 3000 p (03) 8660 3000 www.reedsconsulting.com.au survey@reedsconsulting.com.au		LICENSED SURVEYOR TOMAS CHAMPION	

EASEMENT INFORMATION

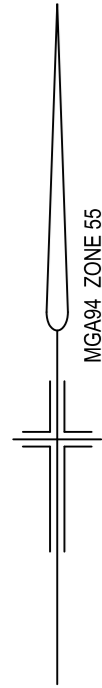
LEGEND: A - APPURTENANT EASEMENT E - ENCUMBERING EASEMENT R - ENCUMBERING EASEMENT (ROAD)

EASEMENT REFERENCE	PURPOSE	WIDTH (METRES)	ORIGIN	LAND BENEFITED /IN FAVOUR OF
E-1	WAY	SEE DIAG.	L 583652W	C/T VOL.9402 FOL.512
E-2, E-6	CARRIAGEWAY	SEE DIAG.	PS 733270G	LOT B ON PS 733270G
E-3, E-7	POWER SUPPLY (OVERHEAD)	SEE DIAG.	PS 733270G	POWERCOR AUSTRALIA LTD.
E-4 , E-21	WATER SUPPLY	SEE DIAG.	PS 733270G	LOT B ON PS 733270G
E-5, E-6, E-7, E-8, E-21	PIPELINES OR ANCILLARY PURPOSES	SEE DIAG.	PS 747682D SEC. 136 WATER ACT 1989	BARWON REGION WATER CORPORATION
E-9	PIPELINES OR ANCILLARY PURPOSES	SEE DIAG.	PS 800324N SEC. 136 WATER ACT 1989	BARWON REGION WATER CORPORATION
E-8, E-9	DRAINAGE	SEE DIAG.	PS 747682D	SURF COAST SHIRE COUNCIL
E-11	PIPELINES OR ANCILLARY PURPOSES	SEE DIAG.	PS 804773K SEC. 136 WATER ACT 1989	BARWON REGION WATER CORPORATION
E-10, E-11	DRAINAGE	SEE DIAG.	PS 804773K	SURF COAST SHIRE COUNCIL
E-12, E-14	PIPELINES OR ANCILLARY PURPOSES	SEE DIAG.	THIS PLAN SEC. 136 WATER ACT 1989	BARWON REGION WATER CORPORATION
E-13, E-14	DRAINAGE	SEE DIAG.	THIS PLAN	SURF COAST SHIRE COUNCIL

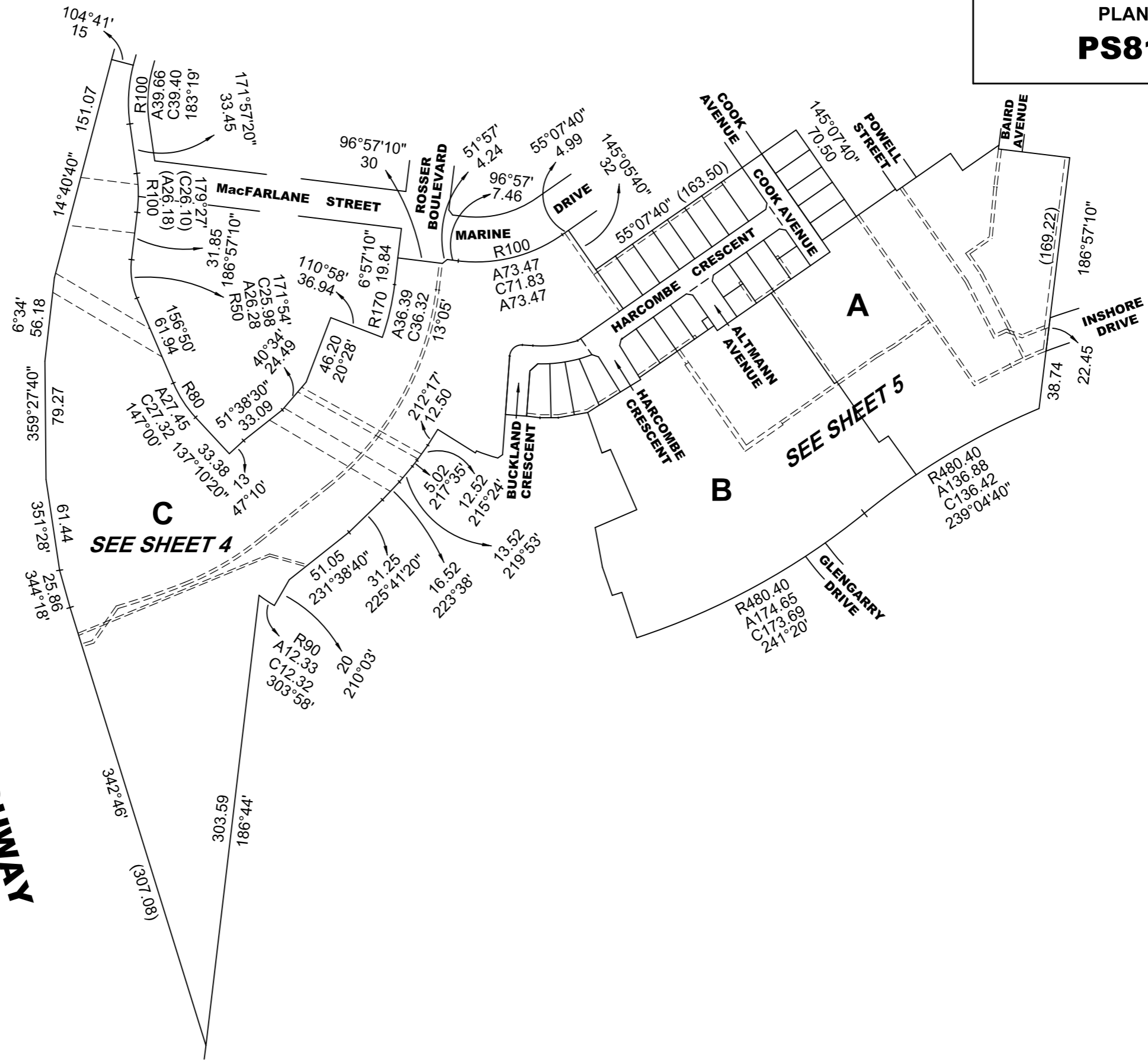
REF: **21437/14** VERSION: **F** DATE: 20/12/19
21437-14-PS-M-F.DGN

ORIGINAL SHEET
SIZE A3

SHEET 2



SURF COAST HIGHWAY



REF: **21437/14** VERSION: **F** DATE: 20/12/19
21437-14-PS-M-F.DGN



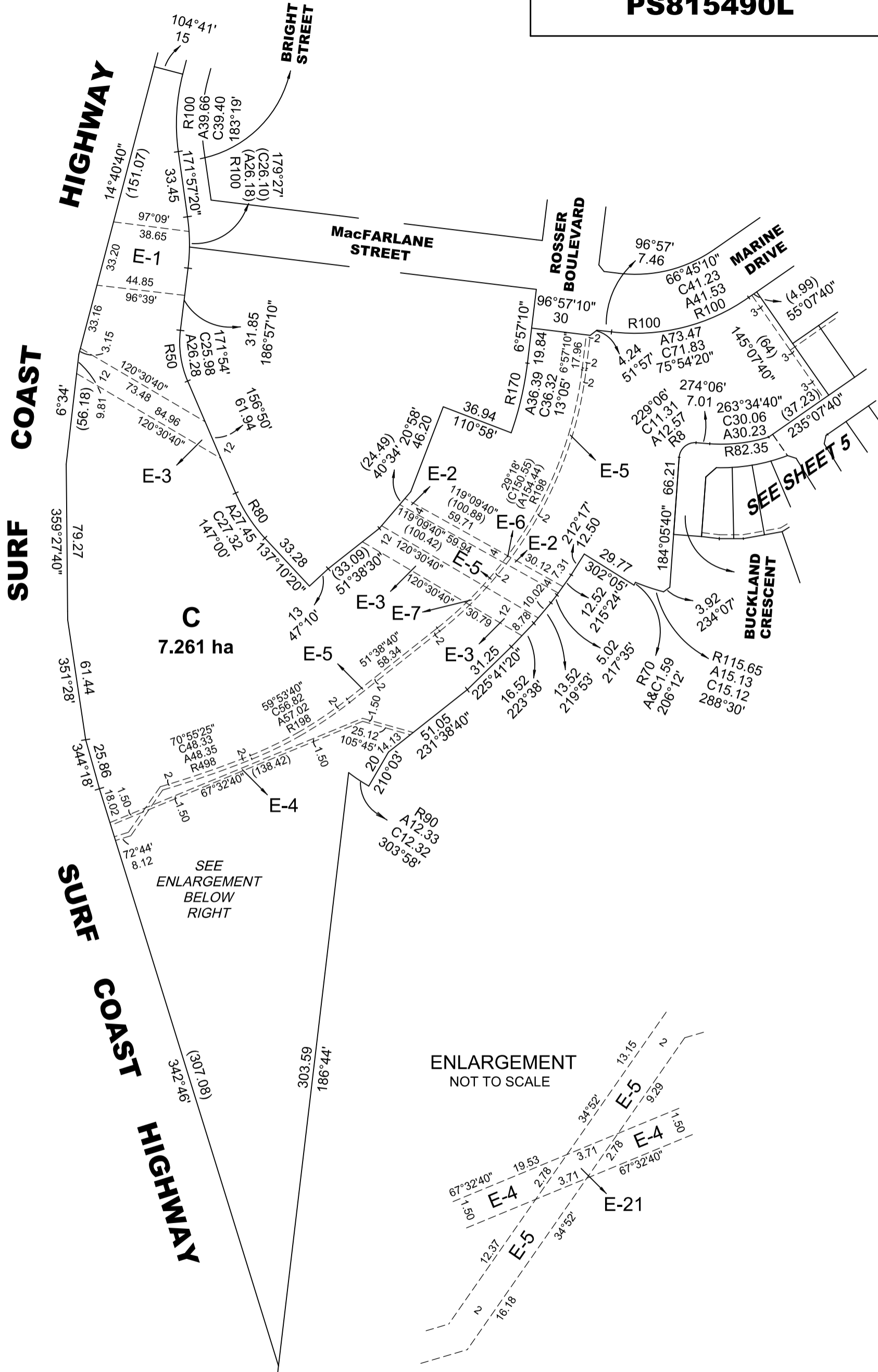
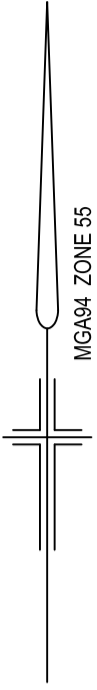
Reeds Consulting Pty Ltd
Lvl 6, 440 Elizabeth Street
Melbourne Victoria 3000
p (03) 8660 3000
www.reedsconsulting.com.au
survey@reedsconsulting.com.au

SCALE **1:3000**
40 0 40 80 120
LENGTHS ARE IN METRES

ORIGINAL SHEET
SIZE **A3**

SHEET 3

LICENSED SURVEYOR
..... **TOMAS CHAMPION**

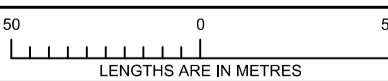


REF:
21437/14

VERSION:
F

DATE: 20/12/19
21437-14-PS-M-F.DGN

SCALE
1:2000



ORIGINAL SHEET
SIZE **A3**

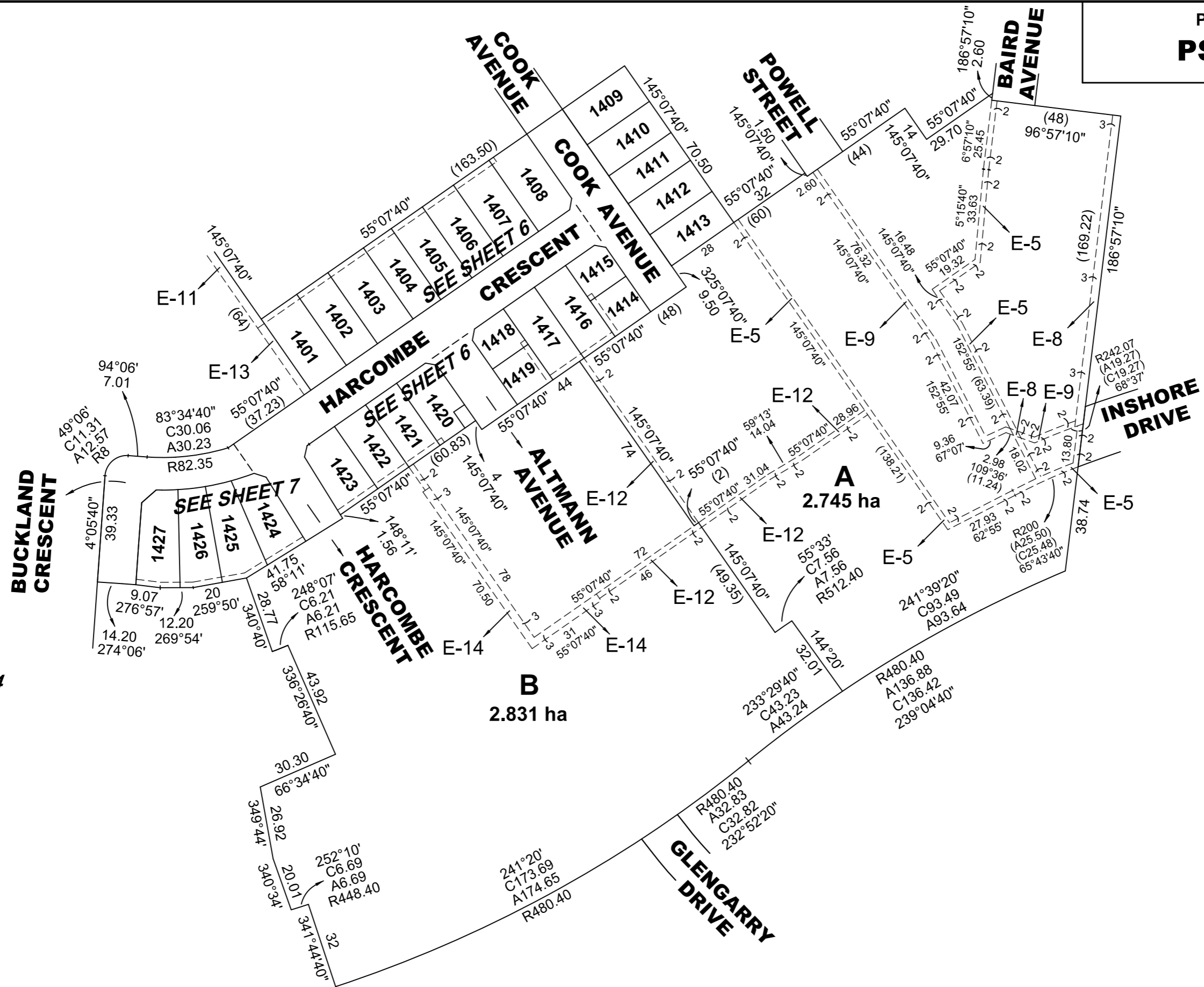
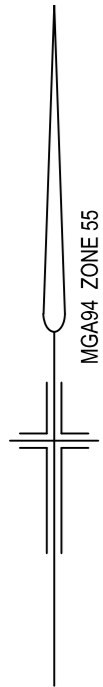
SHEET 4



Reeds Consulting Pty Ltd
Lvl 6, 440 Elizabeth Street
Melbourne Victoria 3000
p (03) 8660 3000
www.reedsconsulting.com.au
survey@reedsconsulting.com.au

LICENSED SURVEYOR

TOMAS CHAMPION



C
SEE SHEET 4

REF: 21437/14 VERSION: F DATE: 20/12/19
21437-14-PS-M-F.DGN



Reeds Consulting Pty Ltd
Lvl 6, 440 Elizabeth Street
Melbourne Victoria 3000
p (03) 8660 3000
www.reedsconsulting.com.au
survey@reedsconsulting.com.au

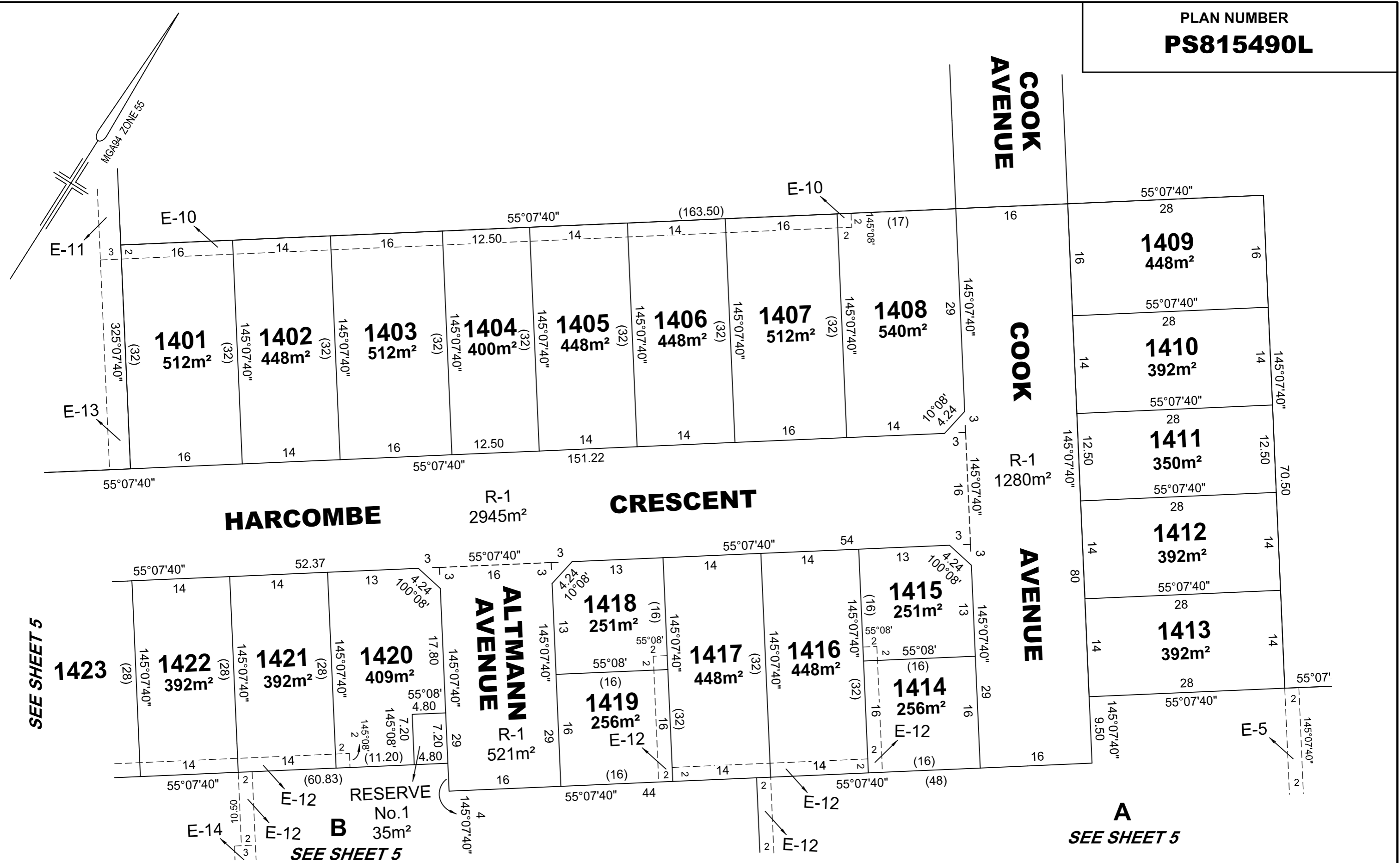
SCALE 1:1500
LENGTHS ARE IN METRES

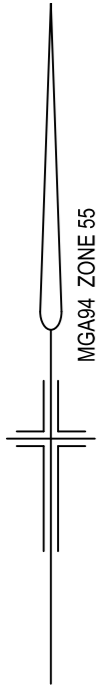
ORIGINAL SHEET
SIZE A3

SHEET 5

LICENSED SURVEYOR

TOMAS CHAMPION

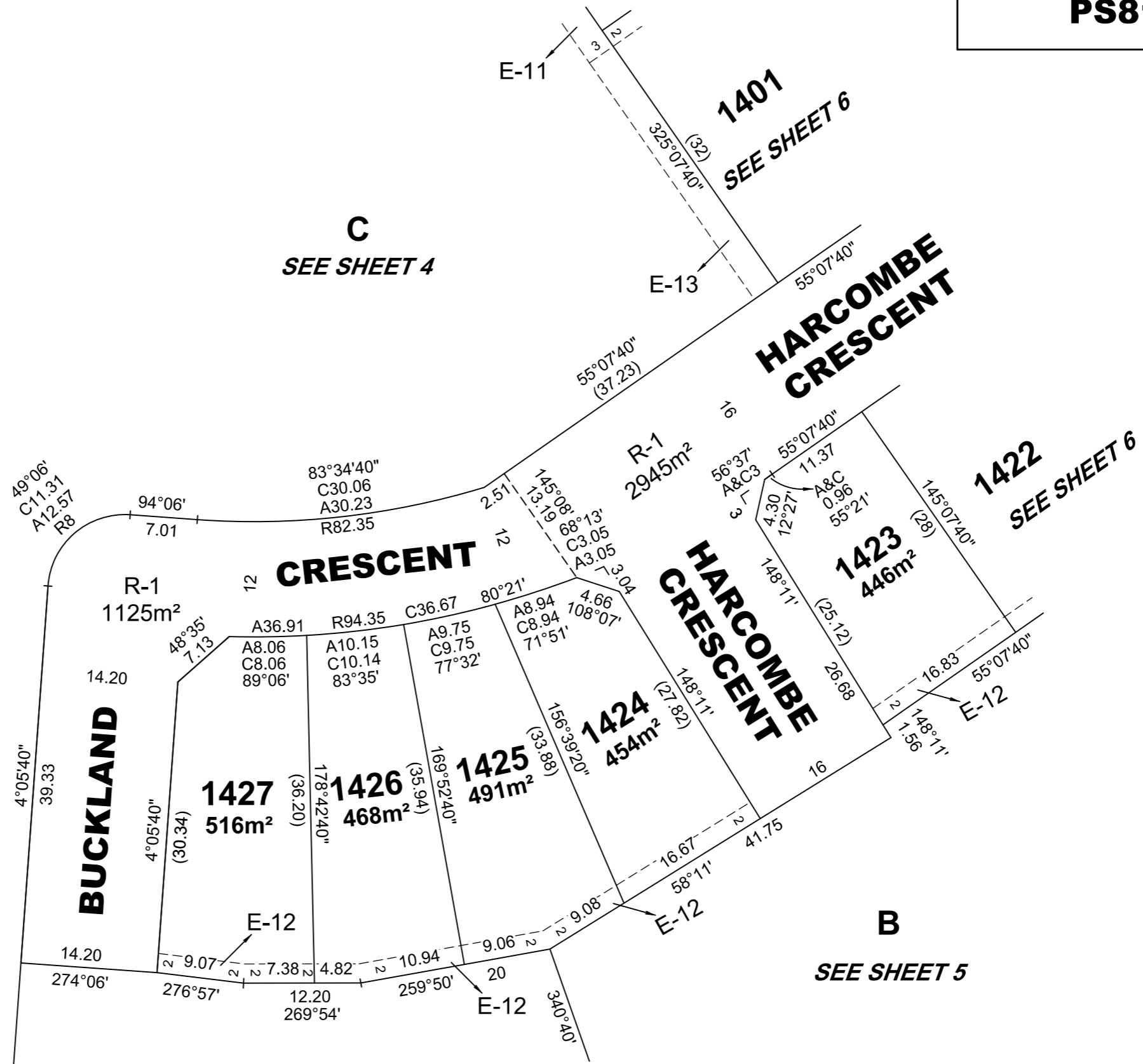




C
SEE SHEET 4

C
SEE SHEET 4

B
SEE SHEET 5



REF: **21437/14** VERSION: **F** DATE: 20/12/19
21437-14-PS-M-F.DGN



Reeds Consulting Pty Ltd
Lvl 6, 440 Elizabeth Street
Melbourne Victoria 3000
p (03) 8660 3000
www.reedsconsulting.com.au
survey@reedsconsulting.com.au

SCALE **1:500**
10 0 10 20
LENGTHS ARE IN METRES

ORIGINAL SHEET
SIZE A3

SHEET 7

LICENSED SURVEYOR

TOMAS CHAMPION